

# FILING CABINET LOCK - 19 MM

## QUICK FIX - ROUND AND SQUARE FACES

### Applications

This lock is ideal for use on filing cabinets.

Rotating the key results in 90° or 180° rotary cam movement.

The lock can be fitted in seconds by simply pushing into the panel cutout.

Suits panels 0.5 to 0.9 mm thick. Ask for optional panel thicknesses.

### Specifications

- Zinc alloy diecast housing
- Key removable in locked and unlocked positions
- Zinc-plated steel cam
- Stainless steel capped barrel
- One pair of nickel-plated keys per lock

### Code Information

#### KEY SERIES

- 01 200 combinations - non-master keying
- 02 200 combinations - master keying
- 07 500 combinations - non-master keying
- 08 500 combinations - master keying
- 17 2000 combinations - non-master keying
- 18 2000 combinations - master keying

#### FINISH

- 3 Bright chrome
- 4 Satin chrome

#### MOVEMENT

- B 180° clockwise or anti-clockwise to unlock

#### FIXING (Refer to page A105 for applications)

- Q Quick fix spring clip (oil-dipped finish)
- K Quick fix spring clip (silver finish - Dacromat)

#### CAM TYPE

- Refer to page A102



A/FSX1

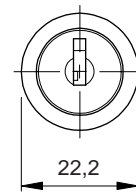


A/FRX1

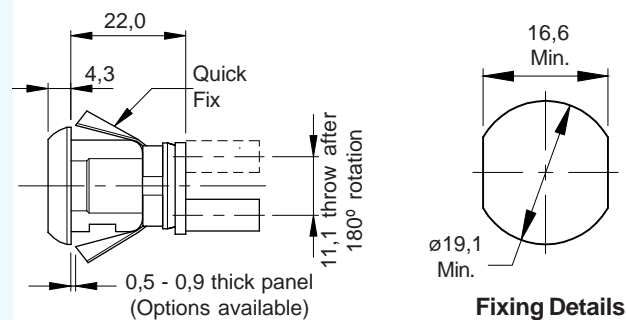
#### Dimensions/Fixing shown NTS



Square Face



Round Face



Fixing Details

### Ordering Details

#### Measurements shown in mm

- STEP 1**    **STEP 2**    **STEP 3**    **STEP 4**
- A / FRX1 / KEY SERIES / FINISH + MOVEMENT / FIXING + CAM TYPE (Round face)
- A / FSX1 / KEY SERIES / FINISH + MOVEMENT / FIXING + CAM TYPE (Square face)

Ordering example: A / F R X 1 / 01 / 3 B / Q 8 3

- **ADVISE**    Keying requirements, e.g. keyed alike

# FILING CABINET LOCK - 20 MM

## QUICK FIX - ROUND AND SQUARE SLIMLINE FACES

### Applications

This lock is ideal for use on filing cabinets.

Rotating the key results in 180° rotary cam movement.

The lock can be fitted in seconds by simply pushing into the panel cutout.

Suits panels 0.5 to 0.9 mm thick. Ask for optional panel thicknesses.



### Specifications

- Zinc alloy diecast housing
- Single entry keying - 01 and 02
- Double entry keying - 07, 08, 17 and 18
- Key removable in locked and unlocked positions
- Zinc-plated steel cam
- Stainless steel capped barrel
- One pair of nickel-plated keys per lock

### Code Information

#### KEY SERIES

- 01 200 combinations - non-master keying
- 02 200 combinations - master keying
- 07 500 combinations - non-master-keying
- 08 500 combinations - master keying
- 17 2000 combinations - non-master keying
- 18 2000 combinations - master keying

#### FINISH

- 3 Bright chrome
- 4 Satin chrome

#### MOVEMENT

- B 180° clockwise or anti-clockwise to unlock

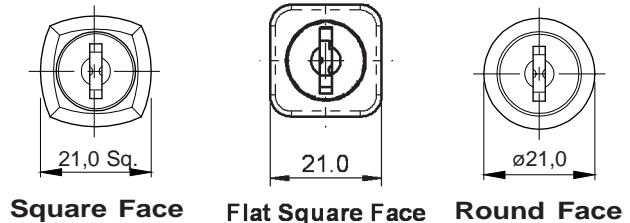
#### FIXING (Refer to page A105 for applications)

- Z Quick fix spring clip (oil-dipped finish)
- Y Quick fix spring clip (silver finish - Dacromat)

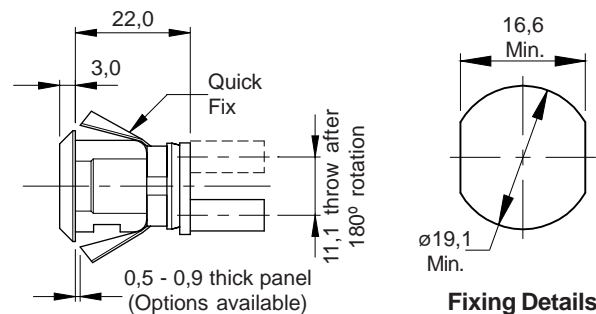
#### CAM TYPE

- Refer to page A102

#### Dimensions/Fixing shown NTS



Square Face    Flat Square Face    Round Face



Fixing Details

### Ordering Details

#### Measurements shown in mm

STEP 1	STEP 2	STEP 3	STEP 4
A / FRX2 /	KEY SERIES /	FINISH + MOVEMENT /	FIXING + CAM TYPE (Round face)
A / FSX2 /	KEY SERIES /	FINISH + MOVEMENT /	FIXING + CAM TYPE (Square face)
A / FNX2 /	KEY SERIES /	FINISH + MOVEMENT /	FIXING + CAM TYPE (Square face)

Ordering example: A / F S X 2 / 0 7 / 3 B / Z 8 3

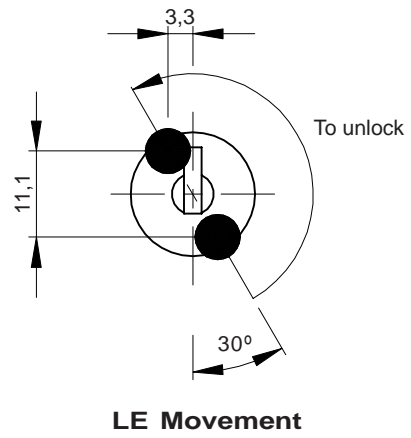
- ADVISE    Keying requirements, e.g. keyed alike

# CAMS - FILING CABINET

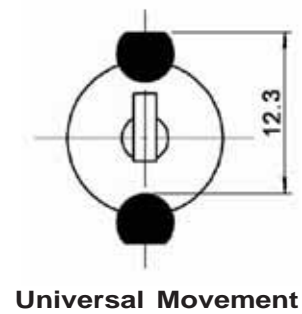
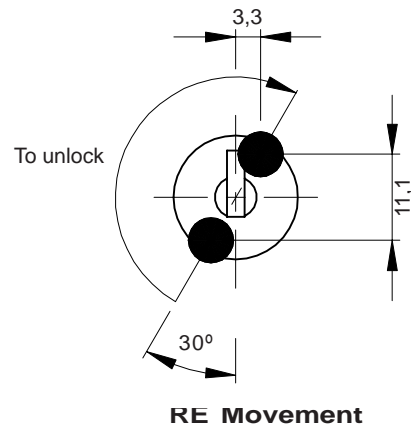
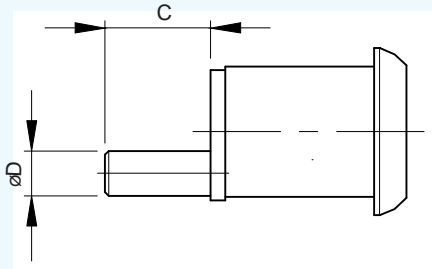
## Ordering Details

CAM NO.			DIM 'C'	DIM 'øD'
LE	RE	UNIVERSAL		
83	93		13	6
84	94		7	6
86	96		16,7	8
87	97		14	8
		D4	13	6

## View from front of lock



## Pin Detail



*Dimensions/Fixing shown NTS  
Measurements shown in mm*